

Public Notice

Howard County will receive sealed bids until 3:00 pm on January 20, 2021 to erect and install a 400' Guy Tower per Standard: TIA-222-H.

Specifications are available at the Auditor's Office, Courthouse, Big Spring, TX 79720. 432-264-2210

Bids may be mailed to Howard County Auditor, PO Box 1949, Big Spring, TX 79721-1949 or delivered to the Auditor's Office, Room 202, Howard County Courthouse. Mark the sealed envelope "tower bid".

Bids will be presented to the Commissioners' Court at 3:30 pm on January 20, 2021 for their consideration. The Court reserves the right to reject any or all bids.

Howard County Texas
PO Box 1949
Big Spring, TX 79721-1949

The County of Howard, TX at 300 South Main is soliciting bids to furnish all necessary materials, permits, PE stamp, labor and equipment to erect and install a 400' Guy Tower at the approximate location of 32.223611N/101.427222W per Standard: TIA-222-H. This bid will include multiple structural enhancements at multiple locations on the tower to accommodate future antenna placements as well as required tower grounding and perimeter fencing. It will also include site preparation, tower foundation and guy foundation with all necessary soil testing, reinforcement steel, concrete, and anchors.

Include in your quote package company information including years in business, references of installation of similar equipment with contact information, certificate of insurance for liability, performance bond, and workman compensation.

It is advised that prospective bidders should visit the site prior to bidding.

Bids received after 3 PM January 20th, 2021 will not be considered. Howard County reserves the right to reject any or all bids regardless of reason.

Tower Designations

3-DB 224E Antennas with 1-5/8" lines at 390' (Future)
1-SE4192-SWBPALDF(D00) Antenna with 7/8" line at 330'(RX Antenna)
1-TTA with 1/2" line at 320'(TTA)
1-SE4192-SWBPALDF(D00) Antenna with 1-5/8" line at 330' (Future Antenna)
1-SE4192-SWBPALDF(D00) Antenna with 1-5/8" line at 310' (TX Antenna)
1-SE4192-SWBPALDF(D00) Antenna with 1-5/8" line at 310' (Future Antenna)
1-250 sq. ft. 2500 lb loading with 12- 1-5/8" lines at 250' (Future)
1-SC3-W100A Dish with E105 line at 135'
1-SB6-W60CC2 Dish with E65 line at 90'
1-SB6-W60CC2 Dish with E65 line at 130' (Future)

Tower Specifications:

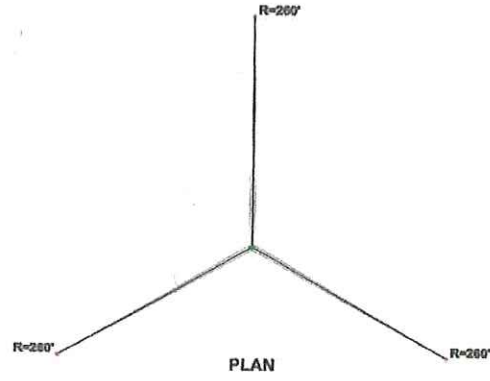
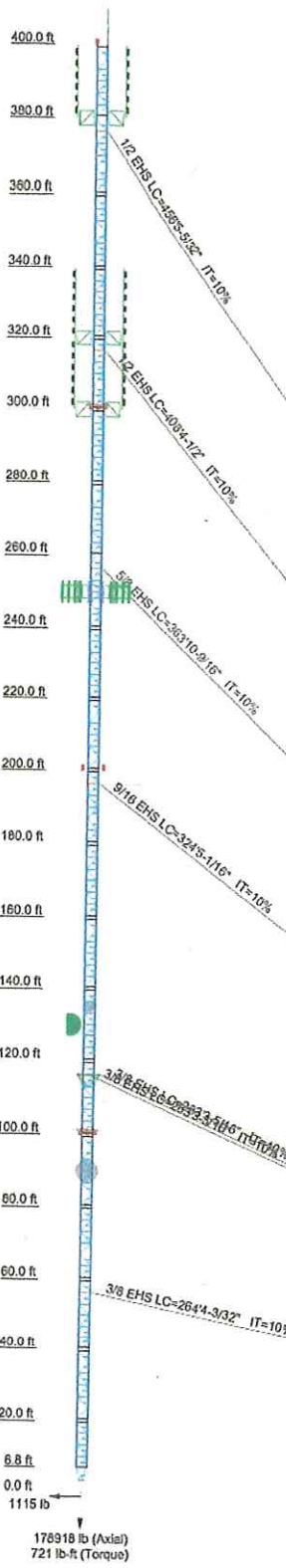
Standard: TIA-222-H
Exposure C (Includes flat open country/grassland/hurricane prone shorelines)
Risk Category: IV (Structures that due to use or location represent a substantial hazard to the community in the event of failure)
Topographic Category: 1
Max Basic Wind Speed: 116
Max Basic Wind Speed with Ice: 30 mph
Max Ice Thickness: 1.00 inch (Ice considered to increase in thickness with height)
Construction: Solid round legs and braces (hot dipped galvanized after fabrication)

Tower Foundation Design:

Professionally Engineered Base with necessary soil borings to support design. Base to include all future antenna placements with required concrete, steel and anchors to support tower structure.

- * Tower steel and hardware
- * Climbing ladder fabricated into one face
- * Vertical waveguide ladder fabricated into two faces
- * Safety climb kit
- * P.E. Stamp for any and all structural components and related design
- * Required paint applied (submit documents with MSDS sheet, brand, and type)
- * Required Guys for 400' engineered tower steel with all necessary concrete and anchors
- * Dual LED lighting system
- * All necessary Freight, Labor, and Equipment
- * Geotech (soil borings)
- * NEPA/SHPO
- * Survey with 1A Certificate
- * Site Drawings
- * 10' Ice Bridge Kit
- * Performance Bond
- * Tower Foundation
- * Tower Erection
- * Concrete Test
- * Shelter offload and setup
- * Grounding of Shelter
- * Grounding of Tower
- * Installation of a 50' x 50' chain link fence topped with 3 strand barbed wire. Fence to include a walk thru gate and a 12' drive thru gate. Fence compound shall be grounded and ground tested.

Section	321	322	318	319	316	317	318	319	320	321	322	323	324	325
Legs	SR 2		SR 2	SR 2	SR 1	SR 1	SR 1	SR 1	SR 1	SR 1	SR 1	SR 1	SR 1	SR 1
Log Grade														
Diagrams														
Original Grade														
Top Sibs														
Bottom Sibs														
Horizontals														
Sec. Horizontals														
Top Bay Pile-Offs														
Facewidth (ft)														
# Pivots @ (ft)														
Weight (lb)	17977.0	20231.0	19964.0	20449.0	20994.0	21684.0	22411.0	23180.0	24011.0	24904.0	25851.0	26854.0	27915.0	29087.0



DESIGNED APPURTENANCE LOADING

TYPE	ELEVATION	TYPE	ELEVATION
5/8"x10" Lightning Rod	405	6' Side Arm Mount	300
Flash Beacon Lighting	400	6' Side Arm Mount (Future)	300
DB224-E (Future)	390	L-810 Side Light	300
DB224-E (Future)	390	L-810 Side Light	300
DB224-E (Future)	390	L-810 Side Light	300
6' Side Arm Mount (Future)	390	250 Sq Ft 2500 lbs (Future)	250
6' Side Arm Mount (Future)	390	Flash Beacon Lighting	200
6' Side Arm Mount (Future)	390	Flash Beacon Lighting	200
SE4192-SWBALDF(D00) (Future)	330	SC3-W 100A	135
SE4192-SWBALDF(D00) (P25 RX)	330	S86-W60CC2 (Future)	130
6' Side Arm Mount (Future)	320	L-810 Side Light	100
6' Side Arm Mount (Future)	320	L-810 Side Light	100
CP00732 TTA (TTA)	320	L-810 Side Light	100
SE4192-SWBALDF(D00) (Future)	310	S86-W60CC2	90
SE4192-SWBALDF(D00) (P25 TX 1)	310		

SYMBOL LIST

MARK	SIZE	MARK	SIZE
A	L2x1 1/4x1/8	B	2 @ 3.41657

MATERIAL STRENGTH

GRADE	Fy	Fu	GRADE	Fy	Fu
A529-50	50 ksf	65 ksf	A36	36 ksf	58 ksf

TOWER DESIGN NOTES

1. Tower is located in Howard County, Texas.
2. Tower designed for Exposure C to the TIA-222-H Standard.
3. Tower designed for a 116 mph basic wind in accordance with the TIA-222-H Standard.
4. Tower is also designed for a 30 mph basic wind with 1.00 in ice. Ice is considered to increase in thickness with height.
5. Deflections are based upon a 60 mph wind.
6. Tower Risk Category IV.
7. Topographic Category 1 with Crest Height of 0'
8. Weld together tower sections have flange connections.
9. Connections use galvanized A325 bolts, nuts and locking devices. Installation per TIA/EIA-222 and AISC Specifications.
10. Tower members are "hot dipped" galvanized in accordance with ASTM A123 and ASTM A153 Standards.
11. Welds are fabricated with ER-70S-6 electrodes.
12. TOWER RATING: 98%



ALL REACTIONS ARE FACTORED

NOTICE TO BIDDERS

1. Bids are to be submitted on this form. Each bid shall be placed in an envelope, sealed and properly identified with the bid title and delivered to the County Auditor's Office before the hour and date specified. Late bids will not be considered under any circumstances.
2. The County is exempt from Federal Excise Tax, State Tax and Local Tax. Do not include tax in bid. If it is determined that tax was included in the bid, it will not be included in the tabulation or any awards and will be deleted from subsequent invoices.
3. Bids cannot be altered or amended after opening time. Any alterations made before opening time must be signed by the bidder or his agent. No bid can be withdrawn after the opening time without approval of the Commissioners' Court based on reasonable acceptable reason.
4. The County will evaluate the bids and make awards for supplies, materials, services and equipment on the basis of the lowest and best bid, which meet the specifications.
5. The County reserves the right to accept or reject all or any part of any bid and award the bid to best serve the interest of the County.
6. By signing and executing this bid, the bidder certifies and represents to the County that bidder has not offered, conferred or agreed to confer any pecuniary benefit or other thing of value for the receipt of special treatment, advantage, information, recipient's decision, opinion, recommendation, vote or any other exercise of discretion concerning this bid.
7. Bidder further certifies and represents that bidder has not violated any State, Federal, Local Law regulations or ordinance relating to bribery, improper influence, collusion, discrimination or other similar crimes and all items or services provided or delivered under and awarded shall conform hereto.
8. All equipment shall be new, factory fresh, unless otherwise specified.
9. Awarded bid will be paid for out of current county funds.

BID SUBMITTED BY: _____

NAME & TITLE: _____ PHONE NO: _____

BID PRICE: _____ BID GOOD THRU: _____